



SATO EUROPE

SATO Smart Keyboard Downloader Quick Guide



SATO EUROPE
Halskestr. 15-19
40880 Ratingen
Germany

Tel.: +49 (0)2102 5566-0
Fax.: +49 (0)2102 5566-555

This page is intentionally left blank.

SATO Smart Keyboard Downloader

Install the Smart Keyboard Downloader by starting the Setup.exe file from Disk 1. Follow the instructions during installation shown in the installation wizard routine.

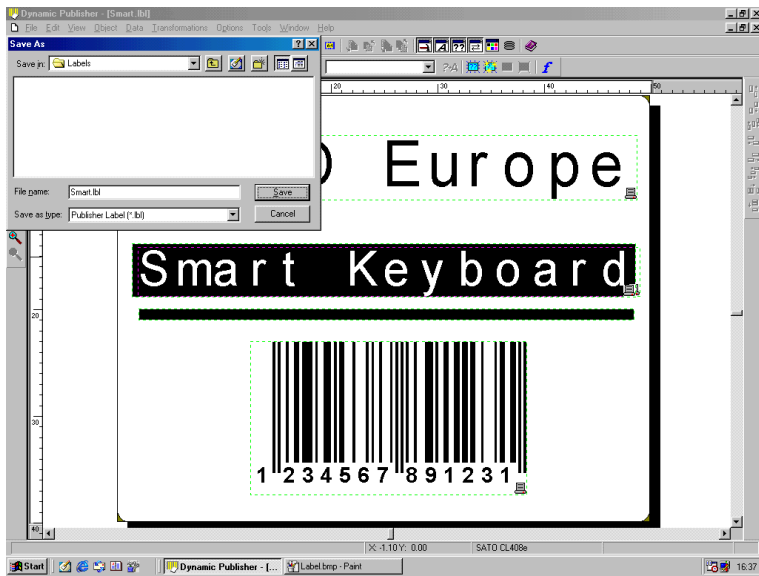
Labels created in SATO Dynamic Aviator are easy to store on the Smart Keyboard, using the SATO Smart Keyboard Downloader.

Follow these simple steps:

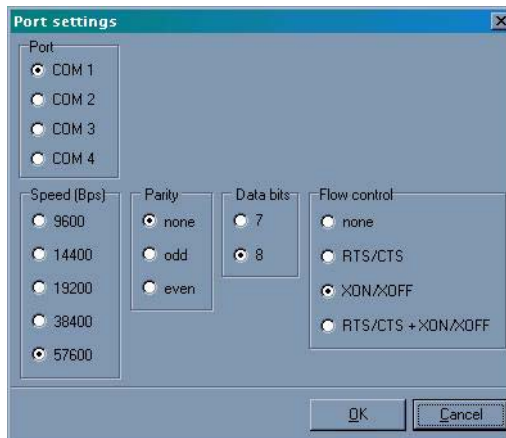
1. Create a label with the SATO Dynamic Aviator software.



2. Save the label under the file name you would like to see later in the Smart Keyboard LCD (Please note that the file name should not be longer than 8 characters).



3. Start the SATO Smart Keyboard Downloader from Program Group. Under Menu Settings, configure the port settings in order to transfer the data to the Smart Keyboard.



4. Once the configuration is complete, open the label file you want to transfer to the Smart Keyboard either by selecting the "Open label" button or under Menu File Open.



5. The Label file and the path you have chosen will be shown, once you have selected the label. Should you also need the Keyboard files you have created, define the Export directory and disable the "Delete temporary files after download" function.



6. To send the label to the Smart Keyboard, either click on the "Send label", the "Download" button or choose Send from Menu File.

